
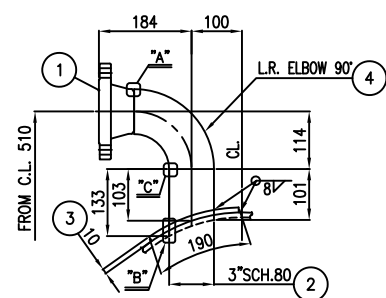



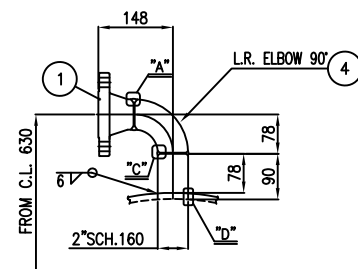
NOTES						
1. UNLESS OTHERWISE NOTED ALL DIMENSIONS ARE IN MILLIMETERS.						
* FOR ONE SET						
3	GUIDE RAIL	SA516-70N	2		t12 x 63.7 x 1412	
2	GUIDE RAIL	SA516-70N	2		t12 x 26.4 x 1412	
1	FULL SUPPORT	SA516-70	4		t10 x #595.2	
PART NO.	PART NAME	MATERIAL	REGULAR QUANTITY	SPARE QUANTITY	SPECIFICATION	REMARK
BILL OF MATERIAL						
RO	06.27.2024	ISSUED FOR APPROVAL (IFA)		D.SH.	M.O.	A.M.
REV.	ISSUE DATE	DESCRIPTION		PREPARED	CHECKED	APPROVED
CLIENT						
<div><p>پتروشیمی توسعه پارک صنعتی گوهر المی</p></div>						
CONSULTING ENGINEER						
PROJECT: STYRENE PARK OFFSITE						
DRAWING TITLE: BUNDLE DETAIL DRAWING FOR CHILLER (EVAPORATOR) (1/2)						
DRAWING NO.			REV.	SIZE	SCALE	SHEET
EI027-HSE-VD-ME-DWG-008			R0	A3	NTC	3 of 8

DRAWING NO.					REV.	SIZE	SCALE	SHEET
EI027-HSE-VD-ME-DWG-008					R0	A3	NTC	4 of 8



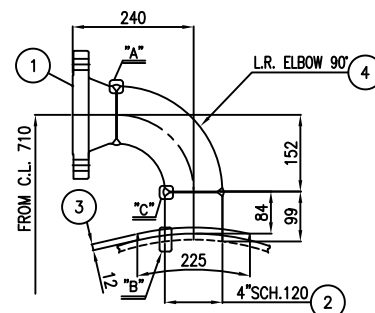



DETAIL OF 

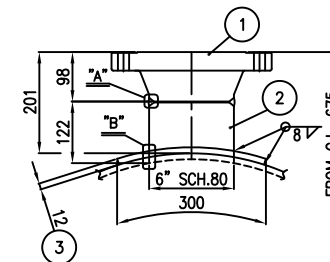


DETAIL OF 

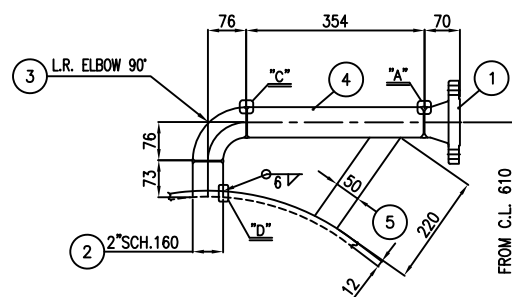
D1	D2	S3
2"	2"	2"




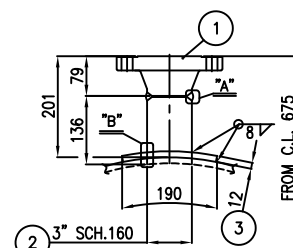
DETAIL OF 




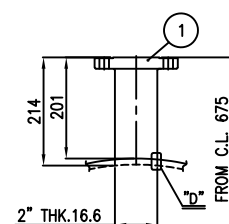
DETAIL OF 



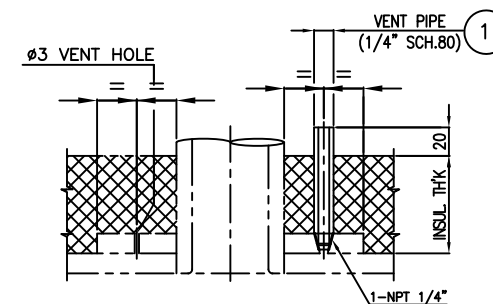
DETAIL OF 



DETAIL OF 



DETAIL OF  $\frac{V}{2''}$



HOLES ON REINF. PAD

T1 3"	T2 3"	
PSV 3"	S1 4"	S2 6"

(SEE NOTE "2.3")

NOTES
1. UNLESS OTHERWISE NOTED ALL DIMENSIONS ARE IN MILLIMETERS 2. FOR THE TEST VENT HOLES #3 WILL BE OBTURED BY WELDING. 3. AFTER TEST 1/4" HOLE SHALL BE FILLED WITH THREADED TUBE EXTENDING BEYOND INSULATION.

BILL OF MATERIAL FOR ONE SET							
2	HALF COUPLING	SA105	5	1/4" ASME 3000#			
1	VENT PIPE	SA106-B	5	1/4" SCH.80, L80			
5	GUSSET	SA516-70	2	1.5 x 50 x 235			
4	NOZZLE NECK	SA333-6	2	2" SCH.160 x L354			
3	ELBOW	SA420-WPL6	2	2" SCH. 160 , LR 90"			
2	NOZZLE NECK	SA333-6	2	2" SCH.160 x L73			
1	FLANGE (SCH.160)	SA350-LF2 CL.1N	2	2" ASME 300# WNLRF			
3	ELBOW	SA420-WPL6	3	2" SCH. 160 , LR 90"			
2	NOZZLE NECK	SA333-6	3	2" SCH.160 x L90			
1	FLANGE (SCH.160)	SA350-LF2 CL.1N	3	2" ASME 300# WNLRF			
1	FLANGE (THK.16.6)	SA350-LF2 CL.1N	1	2" ASME 300# WNLRF			
3	REINF. PAD	SA516-70N	1	112 x #220			
2	NOZZLE NECK	SA333-6	1	4" SCH.120 x L131			
1	FLANGE (SCH.120)	SA350-LF2 CL.1N	1	4" ASME 300# WNLRF			
3	REINF. PAD	SA516-70N	1	112 x #190			
2	NOZZLE NECK	SA333-6	1	3" SCH.160 x L136			
1	FLANGE (SCH.160)	SA350-LF2 CL.1N	1	3" ASME 300# WNLRF			
3	REINF. PAD	SA516-70N	1	112 x #300			
2	NOZZLE NECK	SA333-6	1	6" SCH.80 x L122			
1	FLANGE (SCH.80)	SA350-LF2 CL.1N	1	6" ASME 300# WNLRF			
4	ELBOW	SA234 WPB	2	3" SCH.80 , LR 90"			
3	REINF. PAD	SA516-70N	2	110 x #190			
2	NOZZLE NECK	SA106-B	2	3" SCH.80 x L133			
1	FLANGE (SCH.80)	SA105N	2	3" ASME 150# WNLRF			
4	ELBOW	SA420-WPL6	1	4" SCH. 120 , LR 90"			
3	REINF. PAD	SA516-70N	1	112 x #225			
2	NOZZLE NECK	SA333-6	1	4" SCH.120 x L99			
1	FLANGE (SCH.120)	SA350-LF2 CL.1N	1	4" ASME 300# WNLRF			
QTY.	PART NO.	PART NAME	MATERIAL	REGULAR QUANTITY	SPARE QUANTITY	SPECIFICATION/REMARK	

B I L L   O F   M A T E R I A L					
RO	06.27.2024	ISSUED FOR APPROVAL (IFA)	D.SH.	M.O.	A.M.
REV.	ISSUE DATE	DESCRIPTION	PREPARED	CHECKED	APPROVED

CLIENT



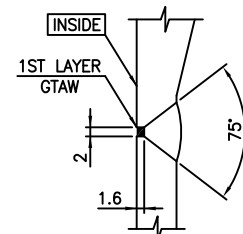
CONSULTING ENGINEER

PROJECT: **STYRENE PARK OFFSITE**

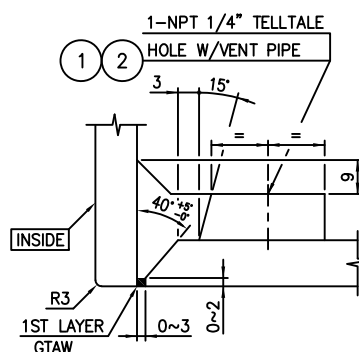
DRAWING TITLE:

**NOZZLE DETAIL DRAWING FOR  
CHILLER (EVAPORATOR)**

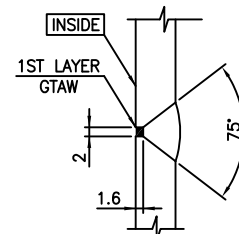
DRAWING NO.	REV.	SIZE	SCALE	SHEET
EI027-HSE-VD-ME-DWG-008	R0	A3	NTC	6 of 8



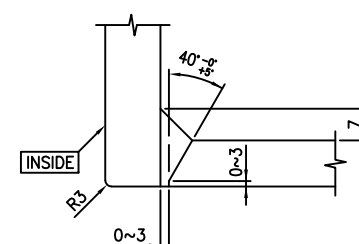
DETAIL "A"



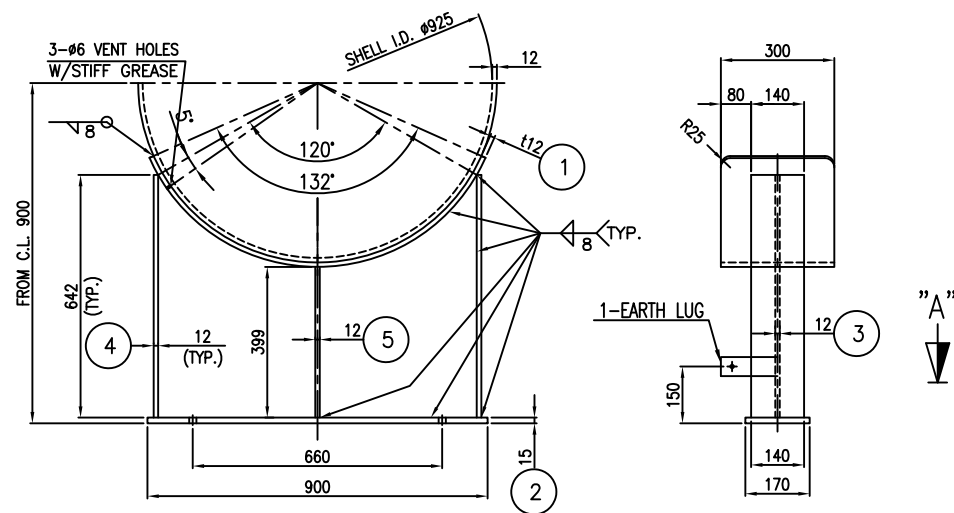
DETAIL "B"



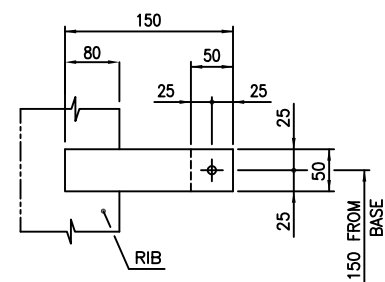
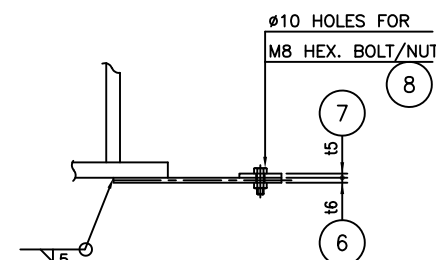
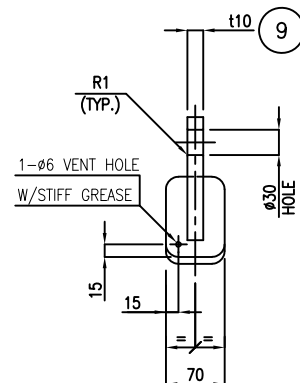
DETAIL "C"



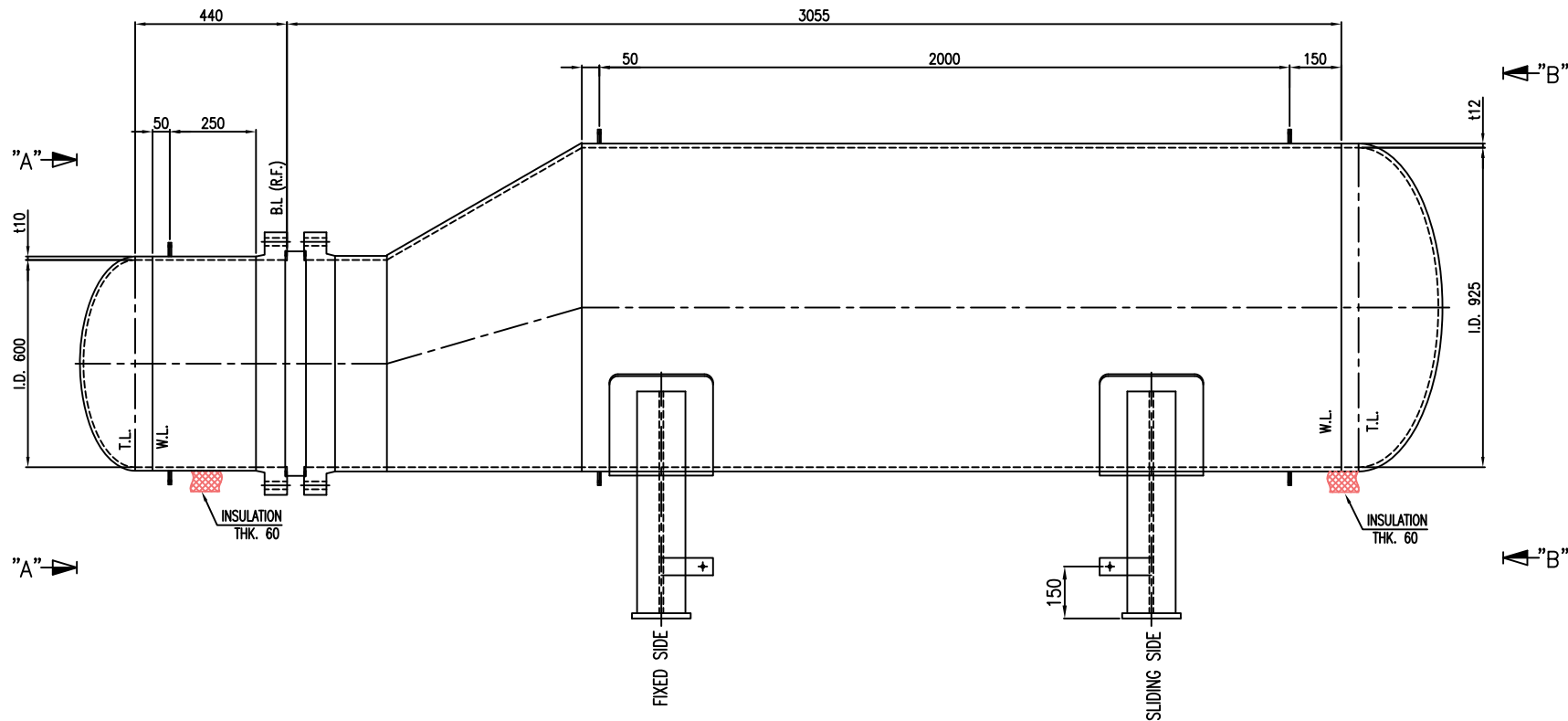
DETAIL "D"



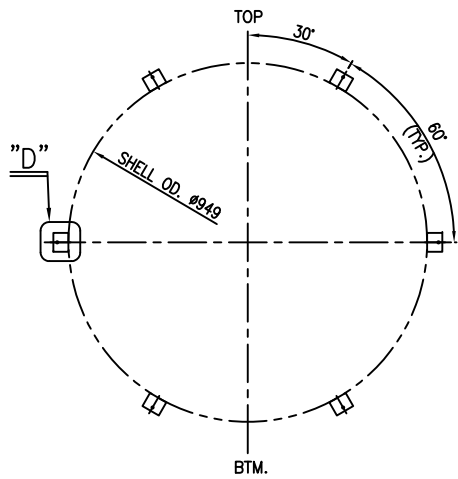
SLIDING SIDE

EARTH LUG

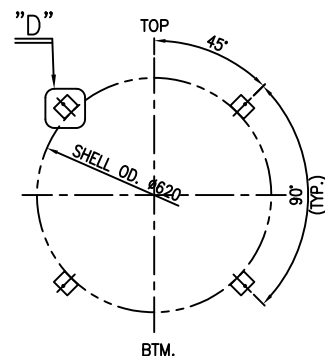
نروشی می توسعه پارک  
صنعتی گوهر افق



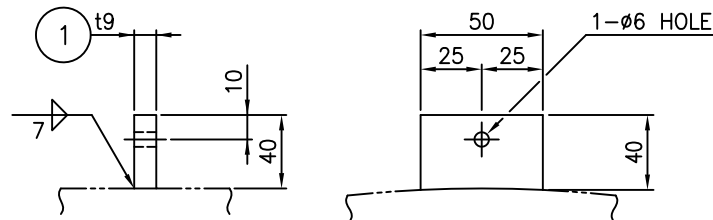
ELEVATION VIEW



VIEW "B"-"B"

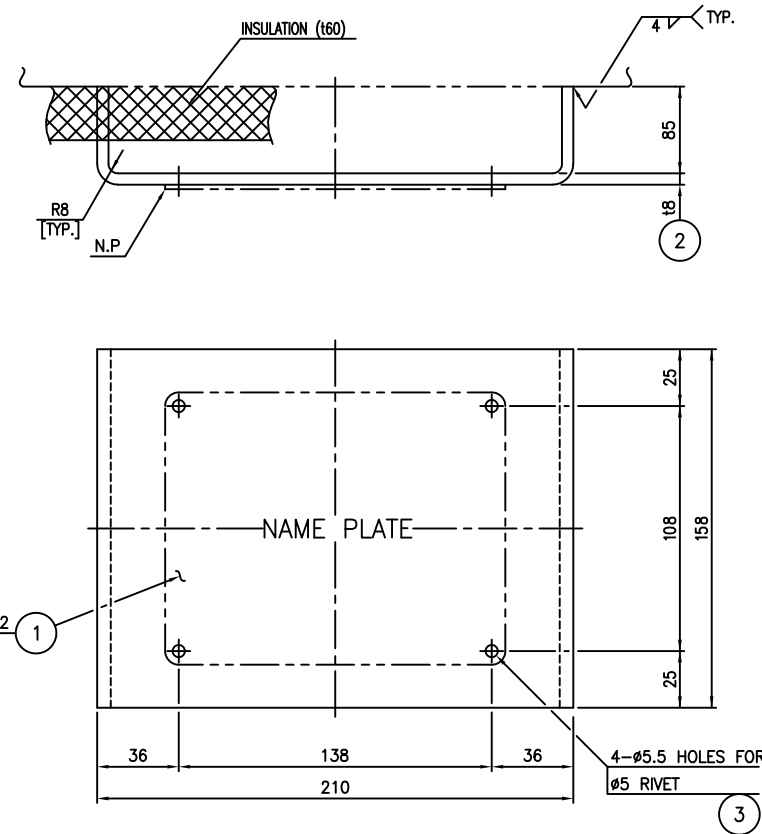


VIEW "A"-"A"



DETAIL "D"

NOTES						
1. UNLESS OTHERWISE NOTED ALL DIMENSIONS ARE IN MILLIMETERS.						



NAME PLATE BRACKET



ناروشیمی توسعه پارک  
صنعتی گوهر افق